



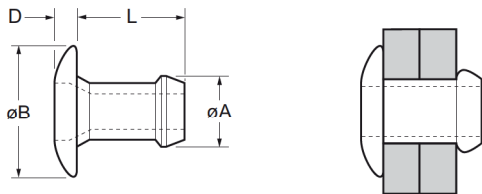
English	Français	Deutsch	Italiano	Español
Dome head	Tête plate	Flachrundkopf	Testa tonda	Cabeza alomada
Aluminium alloy* (5 % Mg)	Alliage d'aluminium* (5% Mg)	Aluminium* (5 % Mg)	Lega di alluminio* (5% Mg)	Aluminio* (5% Mg)
Natural	Brut	Blank	Nessuna finitura	Natural



*: BS 1473 5056A DIN 1725 AlMg5 Werkstoff 3.3555

Optional on request / sur demande / auf Anfrage / su richiesta / bajo petición:

For anodized, dyed red replace part no. 01801 with 01804 / pour anodisé rouge remplacer la série 01801 par 01804 / für rot eloxiert ersetzen Sie 01801 durch 01804 / per anodizzato rosso sostituire 01801 con 01804 / para anodizado rojo cambiar 01801 por 01804

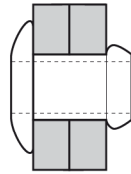
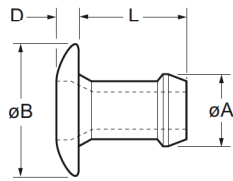
For 2.5 % Mg aluminium alloy replace part no. 01801 with 01861 / pour 2.5 % Mg alliage d'aluminium remplacer la série 01801 par 01861 / für 2.5 % Mg Aluminium-Legierung ersetzen Sie 01801 durch 01861 / per 2.5 % Mg lega di alluminio sostituire 01801 con 01861 / para Aluminio (2,5 % de Mg) cambiar 01801 por 01861







ø	Ø		Ø		øB	D	L	øA			Fasteners per pod Nombre de rivets par chargeur / Niete pro Magazin / Rivetti per caricatore / Uds./carga	Part No/ref
	min.	max.	min.	max.								
2.4 (3/32")	1.14	2.42	2.36	2.44	4.11	0.89	3.98	2.35	0.27	0.44	64	01801-00304
	2.15	3.43					5.00				52	01801-00306
	3.17	4.45					6.02				44	01801-00308
	4.19	5.47					7.04				38	01801-00310
	5.20	6.48					8.05				34	01801-00312
	6.22	7.50					9.07				30	01801-00314
	6.73	8.00					9.57				28	01801-00315
	7.24	8.51					10.08				27	01801-00316
	7.75	9.02					10.59				26	01801-00317
3.2 (1/8")	0.64	1.91	3.26	3.34	6.53	0.99	3.86	3.14	0.76	1.31	59	01801-00403
	1.14	2.42					4.37				58	01801-00404
	1.65	2.87					4.87				50	01801-00405
	2.15	3.43					5.39				48	01801-00406
	3.17	4.45					6.41				42	01801-00408
	4.19	5.47					7.42				37	01801-00410
	5.20	6.48					8.44				33	01801-00412
	6.22	7.50					9.45				29	01801-00414
	7.24	8.51					10.46				26	01801-00416

all dimensions in mm / en millimètres / alle Maße in mm / in millimetri / en milímetros

1) typical values / valeurs moyennes / typische Werte / Valori tipici / valores típicos



ø					øB	D	L	øA			Fasteners per pod Nombre de rivets par chargeur / Niete pro Magazin / Rivetti per caricatore / Uds./carga ± 1	Part No/ref
	min.	max.	min.	max.								
4.0 (5/32")	1.57	2.93	3.97	4.04	8.18	0.99	4.91	3.88	1.14	1.74	52	01801-00505
	2.15	3.43					5.41				49	01801-00506
	2.66	3.94					5.92				44	01801-00507
	3.68	4.96					6.94				39	01801-00509
	4.69	5.97					7.95				34	01801-00511
	5.71	6.99					8.97				31	01801-00513
	6.73	8.00					9.98				26	01801-00515
	7.75	9.02					11.00				24	01801-00517
4.8 (3/16")	1.65	3.30	4.85	4.93	9.71	1.17	5.39	4.77	1.51	2.74	46	01801-00606
	2.03	3.94					6.10				42	01801-00607
	3.68	5.21					7.37				35	01801-00609
	4.95	6.48					8.64				31	01801-00611
	6.22	7.75					9.91				27	01801-00613
	7.49	9.02					11.18				24	01801-00615
	8.76	10.29					12.45				22	01801-00617
	10.03	11.56					13.46				20	01801-00619
6.0	2.66	3.94	5.94	6.02	11.55	1.35	6.93	5.90	1.69	3.29	37	01801-06007
	3.68	4.95					7.94				33	01801-06009
	4.70	5.96					8.96				29	01801-06011
	5.71	6.98					9.98				26	01801-06013
	6.73	7.99					10.99				24	01801-06015
	7.74	9.01					12.00				23	01801-06017

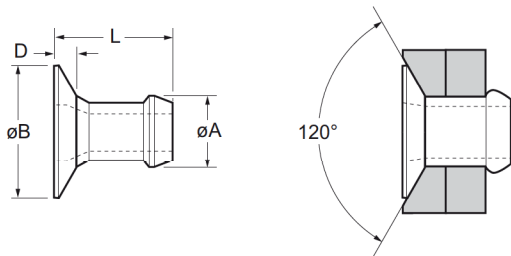
all dimensions in mm / en millimètres / alle Maße in mm / in millimetri / en milímetros

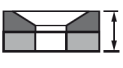
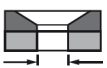
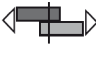

1) typical values / valeurs moyennes / typische Werte / Valori tipici / valores típicos



English	Français	Deutsch	Italiano	Español
120° Countersunk	120° Tête fraisée	120° Senkkopf	120° Testa svasata	120° Cabeza avellanada
Aluminium alloy* (5 % Mg)	Alliage d'aluminium* (5% Mg)	Aluminium* (5 % Mg)	Lega di alluminio* (5% Mg)	Aluminio* (5% Mg)
Natural	Brut	Blank	Nessuna finitura	Natural

*: BS 1473 5056A DIN 1725 AlMg5 Werkstoff 3.3555



ø					øB	D	L	øA			Fasteners per pod Nombre de rivets par chargeur / Niete pro Magazin / Rivetti per caricatore / Uds./carga ± 1	Part No/ref																							
	nom.	min.	max.	min.									max.	max.	max.	max.	kN ¹⁾	kN ¹⁾																	
3.2 (1/8")	1.52	2.79	3.26	3.34	5.84	0.76	4.77	3.14	0.76	1.31	64	01802-00406																							
	2.54	3.81											4.77	3.14	0.76	1.31	52	01802-00407																	
	3.56	4.83																	7.82	3.14	0.76	1.31	44	01802-00408											
	4.57	5.84																							8.84	3.14	0.76	1.31	38	01802-00410					
	5.59	6.86																													8.84	3.14	0.76	1.31	33
4,0 (5/32")	1.57	2.93	3.97	4.04	6.98	1.02	5.18	3.88	1.13	1.73	59	01802-00505																							
	2.15	3.43					5.18						3.88	1.13	1.73	54	01802-00506																		
	2.66	3.94																7.21	3.88	1.13	1.73	49	01802-00507												
	3.68	4.96																						8.22	3.88	1.13	1.73	42	01802-00509						
	4.69	5.97																												9.24	3.88	1.13	1.73	36	01802-00511
	5.71	6.99																																	

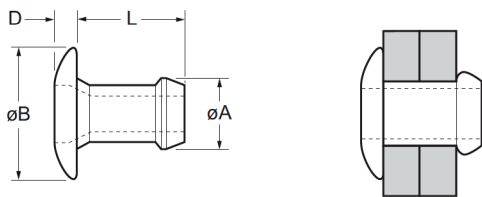
all dimensions in mm / en millimètres / alle Maße in mm / in millimetri / en milímetros

1) typical values / valeurs moyennes / typische Werte / Valori tipici / valores típicos



English	Français	Deutsch	Italiano	Español
Dome head	Tête plate	Flachrundkopf	Testa tonda	Cabeza alomada
Low carbon steel*	Acier bas carbone*	Stahl*	Acciaio a basso tenore di carbonio*	Acero bajo en carbono*
Zinc plated	Revêtement zingué	Verzinkt	Zincato	Zincado
Clear trivalent passivated	Passivation claire trivalente	Klar chromatiert, Cr6-frei	Passivazione chiara trivalente	Pasivado claro trivalente

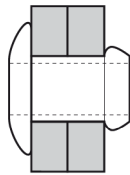
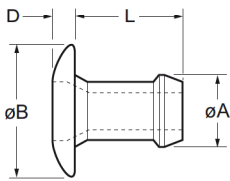
*: SAE 1008 / EN 10263-2 C8C (DIN 10263-2 C8C, Qst 34-3)







ø	Ø		Ø		øB	D	L	øA	kN ¹⁾	kN ¹⁾	Fasteners per pod Nombre de rivets par chargeur / Niete pro Magazin / Rivetti per caricatore / Uds./carga ± 1	Part No/ref
	min.	max.	min.	max.								
3.2 (1/8")	0.64	1.91	3.26	3.34	6.53	0.99	3.86	3.17	1.13	1.82	59	01821-00403
	1.14	2.42					4.37				58	01821-00404
	1.65	2.87					4.87				50	01821-00405
	2.15	3.43					5.39				48	01821-00406
	3.17	4.45					6.41				42	01821-00408
	4.19	5.47					7.42				37	01821-00410
	5.20	6.48					8.44				33	01821-00412
	6.22	7.50					9.45				29	01821-00414
	7.24	8.51					10.46				26	01821-00416
4.0 (5/32")	1.57	2.93	3.97	4.04	8.18	0.99	4.91	3.90	1.65	2.80	52	01821-00505
	2.15	3.43					5.41				49	01821-00506
	2.66	3.94					5.92				44	01821-00507
	3.68	4.96					6.94				39	01821-00509
	4.69	5.97					7.95				34	01821-00511
	5.71	6.99					8.97				31	01821-00513
	6.73	8.00					9.98				26	01821-00515
	7.75	9.02					11.00				24	01821-00517

all dimensions in mm / en millimètres / alle Maße in mm / in millimetri / en milímetros

1) typical values / valeurs moyennes / typische Werte / Valori tipici / valores típicos



ø					øB	D	L	øA			Fasteners per pod Nombre de rivets par chargeur / Niete pro Magazin / Rivetti per caricatore / Uds./carga	Part No/ref	
	min.	max.	min.	max.									max.
4.8 (3/16")	1.65	3.30	4.85	4.93	9.71	1.17	5.39	4.79	2.25	3.71	46	01821-00606	
	2.03	3.94					6.10					42	01821-00607
	3.68	5.21					7.37					35	01821-00609
	4.95	6.48					8.64					31	01821-00611
	6.22	7.75					9.91					27	01821-00613
	7.49	9.02					11.18					24	01821-00615
	8.76	10.29					12.45					22	01821-00617
6.0	2.66	3.94	5.94	6.02	11.55	1.35	6.93	5.93	2.58	4.22	37	01821-06007	
	3.68	4.95					7.94					33	01821-06009
	4.70	5.96					8.96					29	01821-06011
	5.71	6.98					9.98					26	01821-06013
	6.73	7.99					10.99					24	01821-06015
	7.74	9.01					12.00					23	01821-06017

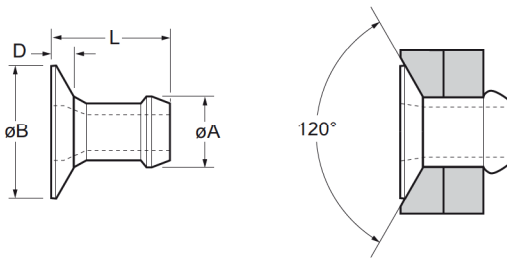
all dimensions in mm / en millimètres / alle Maße in mm / in millimetri / en milímetros





1) typical values / valeurs moyennes / typische Werte / Valori tipici / valores típicos



English	Français	Deutsch	Italiano	Español
120° Countersunk	120° Tête fraisée	120° Senkkopf	120° Testa svasata	120° Cabeza avellanada
Low carbon steel*	Acier bas carbone*	Stahl*	Acciaio a basso tenore di carbonio*	Acero bajo en carbono*
Zinc plated	Revêtement zingué	Verzinkt	Zincato	Zincado
Clear trivalent passivated	Passivation claire trivalente	Klar chromatiert, Cr6-frei	Passivazione chiara trivalente	Pasivado claro trivalente

*: SAE 1008 / EN 10263-2 C8C (DIN 10263-2 C8C, Qst 34-3)



ø					øB	D	L	øA			Fasteners per pod Nombre de rivets par chargeur / Niete pro Magazin / Rivetti per caricatore / Uds./carga	Part No/ref		
	min.	max.	min.	max.									max.	max.
3.2 (1/8")	1.52	2.79	3.26	3.34	5.84	0.76	4.77	3.17	0.95	1.65	64	01822-00406		
	2.54	3.81					5.79						52	01822-00407
	3.56	4.83					6.81						44	01822-00408
	4.57	5.84					7.82						38	01822-00410
	5.59	6.86					8.84						33	01822-00411
4.0 (5/32")	1.57	2.93	3.97	4.04	6.98	1.02	5.18	3.90	1.65	2.80	59	01822-00505		
	2.15	3.43					5.69						54	01822-00506
	2.66	3.94					6.19						49	01822-00507
	3.68	4.96					7.21						42	01822-00509
	4.69	5.97					8.22						36	01822-00511
	5.71	6.99					9.24						32	01822-00513

Special Option: designed for thin sheet applications / Conçu pour des applications de faible épaisseur / für geringe Materialstärken / Progettato per applicazioni in spessori sottili/ Diseñado para aplicaciones de chapa fina

3.2 (1/8")	1.27	2.29	3.26	3.34	5.84	0.74	4.32	3.17	0.95	1.65	72	01810-06480
	1.45	1.70				0.69	4.19					

all dimensions in mm / en millimètres / alle Maße in mm / in millimetri / en milímetros

1) typical values / valeurs moyennes / typische Werte / Valori tipici / valores típicos



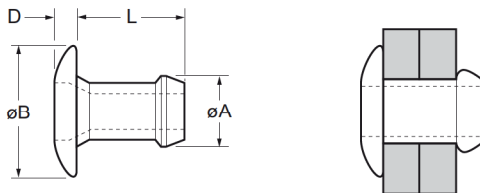
English	Français	Deutsch	Italiano	Español
Dome head	Tête plate	Flachrundkopf	Testa tonda	Cabeza alomada
Brass*	Laiton*	Kupfer-Zink Legierung*	Ottone*	Latón*
Electro tin plated**	Etamage électrolytique**	verzinkt**	Stagnato**	Estañado electrolítico**





*: BS EN 12166 CW 508L DIN 17660 CuZn37

** : We recommend tin plated parts 1833 Series are installed within 9 months from the date they were produced.
 Nous conseillons d'utiliser les pièces en laiton étamé du série 1833 sous un délai de 9 mois après la date de production.
 Wir empfehlen, verzinnte Niete der Serie 1833 innerhalb 9 Monaten nach Produktionsdatum zu verarbeiten.
 Raccomandare di utilizzare i prodotti stagnati serie 1833 entro 9 mesi a decorrere dalla data di fabbricazione.
 Recomendamos utilizar sus piezas estañadas serie 1833 antes de 9 meses desde la fecha de su fabricación.

Optional on request / sur demande / auf Anfrage / su richiesta / bajo petición:

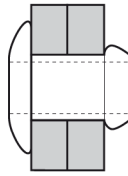
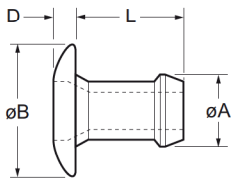
For brightened Brass finish replace 01833 with 01831 / Pour finition brillante remplacer la série 01833 par 01831 /
 Für Oberfläche blank ersetzen Sie 01833 durch 01831 / Per finitura brillante sostituire 01833 con 01831 /
 Para acabado brillante cambiar 01833 por 01831







ø					øB	D	L	øA			Fasteners per pod Nombre de rivets par chargeur / Niete pro Magazin / Rivetti per caricatore / Uds./carga ± 1	Part No/ref
	nom.	min.	max.	min.								
2.4 (3/32")	1.14	2.42	2.36	2.44	4.11	0.89	3.99	2.35	0.44	0.89	64	01833-00304
	2.15	3.43									52	01833-00306
	3.17	4.45									44	01833-00308
	4.19	5.47									38	01833-00310
	5.20	6.48									34	01833-00312
	6.22	7.50									30	01833-00314
	6.73	8.00									28	01833-00315
	7.24	8.51									27	01833-00316
	7.75	9.02									26	01833-00317
3.2 (1/8")	0.64	1.91	3.26	3.34	6.53	0.99	3.86	3.16	1.11	1.91	64	01833-00403
	1.14	2.42									58	01833-00404
	2.15	3.43									50	01833-00406
	3.17	4.45									42	01833-00408
	4.19	5.47									37	01833-00410
	5.20	6.48									33	01833-00412
	6.22	7.50									29	01833-00414
	7.24	8.51									26	01833-00416

all dimensions in mm / en millimètres / alle Maße in mm / in millimetri / en milímetros

1) typical values / valeurs moyennes / typische Werte / Valori tipici / valores típicos



ø					øB	D	L	øA			Fasteners per pod Nombre de rivets par chargeur / Niete pro Magazin / Rivetti per caricatore / Uds./carga ± 1	Part No/ref
	nom.	min.	max.	min.								
4.0 (5/32")	1.57	2.93	3.97	4.04	8.18	0.99	4.91	3.90	1.87	2.75	52	01833-00505
	2.15	3.43					5.41				48	01833-00506
	2.66	3.94					5.92				44	01833-00507
	3.68	4.96					6.94				38	01833-00509
	4.69	5.97					7.95				34	01833-00511
	5.71	6.99					8.97				30	01833-00513
	6.73	8.00					9.98				27	01833-00515
	7.75	9.02					11.00				25	01833-00517
4.8 (3/16")	1.65	3.30	4.85	4.93	9.71	1.17	5.39	4.79	2.31	3.60	46	01833-00606
	2.03	3.94					6.10				42	01833-00607
	3.68	5.21					7.37				35	01833-00609
	4.95	6.48					8.64				31	01833-00611
	6.22	7.75					9.91				27	01833-00613
	7.49	9.02					11.18				24	01833-00615
	8.76	10.29					12.45				22	01833-00617
	10.03	11.56					13.46				20	01833-00619

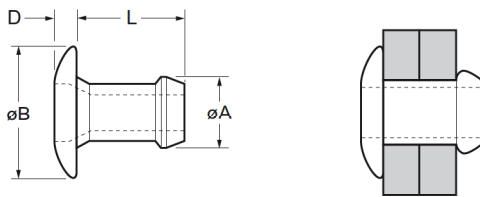
all dimensions in mm / en millimètres / alle Maße in mm / in millimetri / en milímetros





1) typical values / valeurs moyennes / typische Werte / Valori tipici / valores típicos



English	Français	Deutsch	Italiano	Español
Dome head	Tête plate	Flachrundkopf	Testa tonda	Cabeza alomada
A2 Stainless Steel* Polished	A2 Inox* Poli	A2 Edelstahl* Blank	A2 Acciaio inox* Lucido	A2 Acero inoxidable* Pulido

*: BS 3111 394517 Werkstoff 1.4567



ø					øB	D	L	øA			Fasteners per pod Nombre de rivets par chargeur / Niete pro Magazin / Rivetti per caricatore / Uds./carga ± 1	Part No/ref
	nom.	min.	max.	min.								
3.2 (1/8")	1.14	2.42	3.26	3.34	6.53	0.99	4.37	3.14	1.33	1.96	58	01841-00404
	2.15	3.43					50					01841-00406
	3.17	4.45					42					01841-00408
4.0 (5/32")	1.57	2.93	3.97	4.04	8.18	0.99	4.91	3.88	2.45	3.6	52	01841-00505
	2.15	3.43					49					01841-00506
	2.66	3.94					44					01841-00507
	3.68	4.96					38					01841-00509
	4.69	5.97					34					01841-00511
	5.71	6.99					30					01841-00513
4.8 (3/16")	1.65	3.30	4.85	4.93	9.71	1.17	5.39	4.77	3.56	5.12	46	01841-00606
	2.03	3.94					42					01841-00607
	3.68	5.21					35					01841-00609
	4.32	5.84					32					01841-00610
	4.95	6.48					31					01841-00611
	6.22	7.75					27					01841-00613
	7.49	9.02					24					01841-00615
	8.76	10.29					22					01841-00617

all dimensions in mm / en millimètres / alle Maße in mm / in millimetri / en milímetros

1) typical values / valeurs moyennes / typische Werte / Valori tipici / valores típicos